

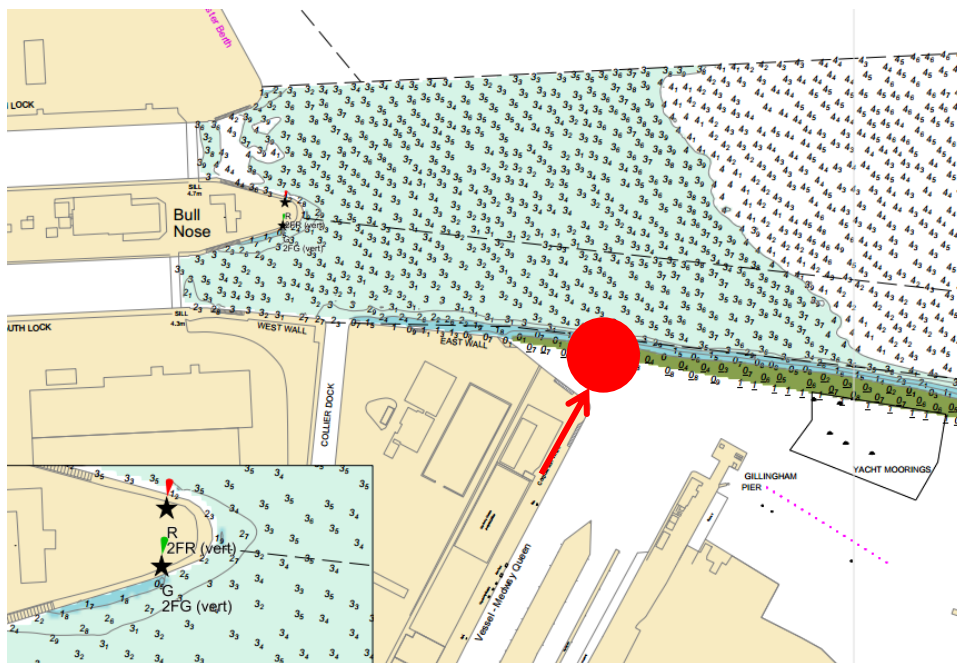
NOTICE TO MARINERS

No. 24 – 2016

GILLINGHAM PIER - SUNKEN CAR

NOTICE IS HEREBY GIVEN that a car has driven off the end of Gillingham Pier and subsequently sunk in the following approximate position;

°51 23.96 ' N °00 33.35 ' E



Inspection works are planned to take place on the 09th of September, and an update will be provided via notice to mariners.

All mariners are advised to navigate with care and caution.

James Goodfellow

Marine Compliance Manager

8th September 2016

Port of Sheerness Limited
 Sheerness Docks
 Sheerness
 Kent
 ME12 1RS

T: +44 (0)1795 596 596
 F: +44 (0)1795 660 072
 E: info@peelports.co.uk
 W: www.peelports.co.uk

